

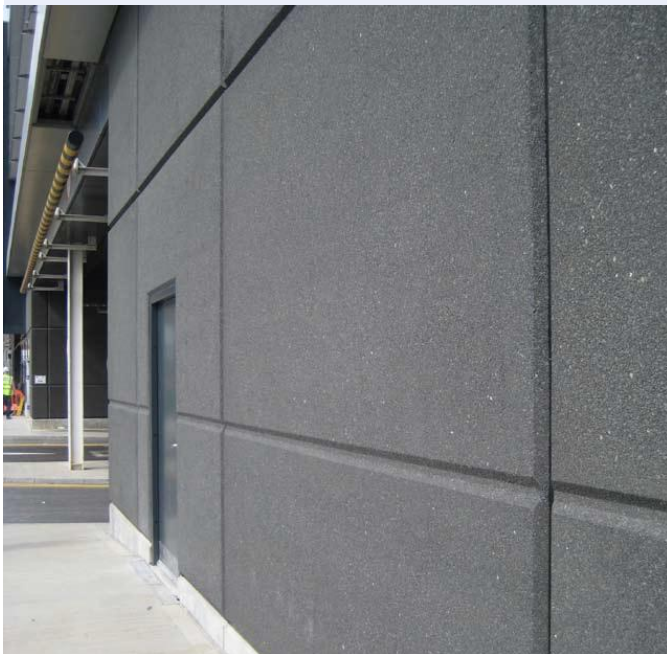
Case Study: Heathrow Terminal 2B

Architect: **Grimshaw**
 Engineer: **Mott MacDonald**
 Contractor: **Balfour Beatty**
 Value: **£760,000**
 Completed: **Feb 2010**

To design, supply and install 254 No reconstructed stone cladding panels to a new Terminal building at Heathrow Airport. The largest panels being 3m wide x 4.2m high weighing 4.7 Tonnes.

All works completed over a 9 week installation programme.

The panels were manufactured using a special mix incorporating black granite aggregate and grey cement and incorporated all necessary stainless steel fixings to the main structure.



EVANS CONCRETE PRODUCTS LIMITED Pye Bridge Industrial Estate, Main Road, Pye Bridge,
 Near Alfreton, Derbyshire DE55 4NX Tel +44 (0)1773 529200 Fax +44 (0)1773 570354
 Email evans@evansconcreteproducts.co.uk Web www.evansconcreteproducts.co.uk
 Registered in England No. 02517363