

CLASH WITH SHEAR STUDS.  
CAN HEIGHT OF STUDS BE  
REDUCED TO MISS REBAR  
LAYER?

REBAR PENETRATIONS THROUGH  
CROSS GIRDER



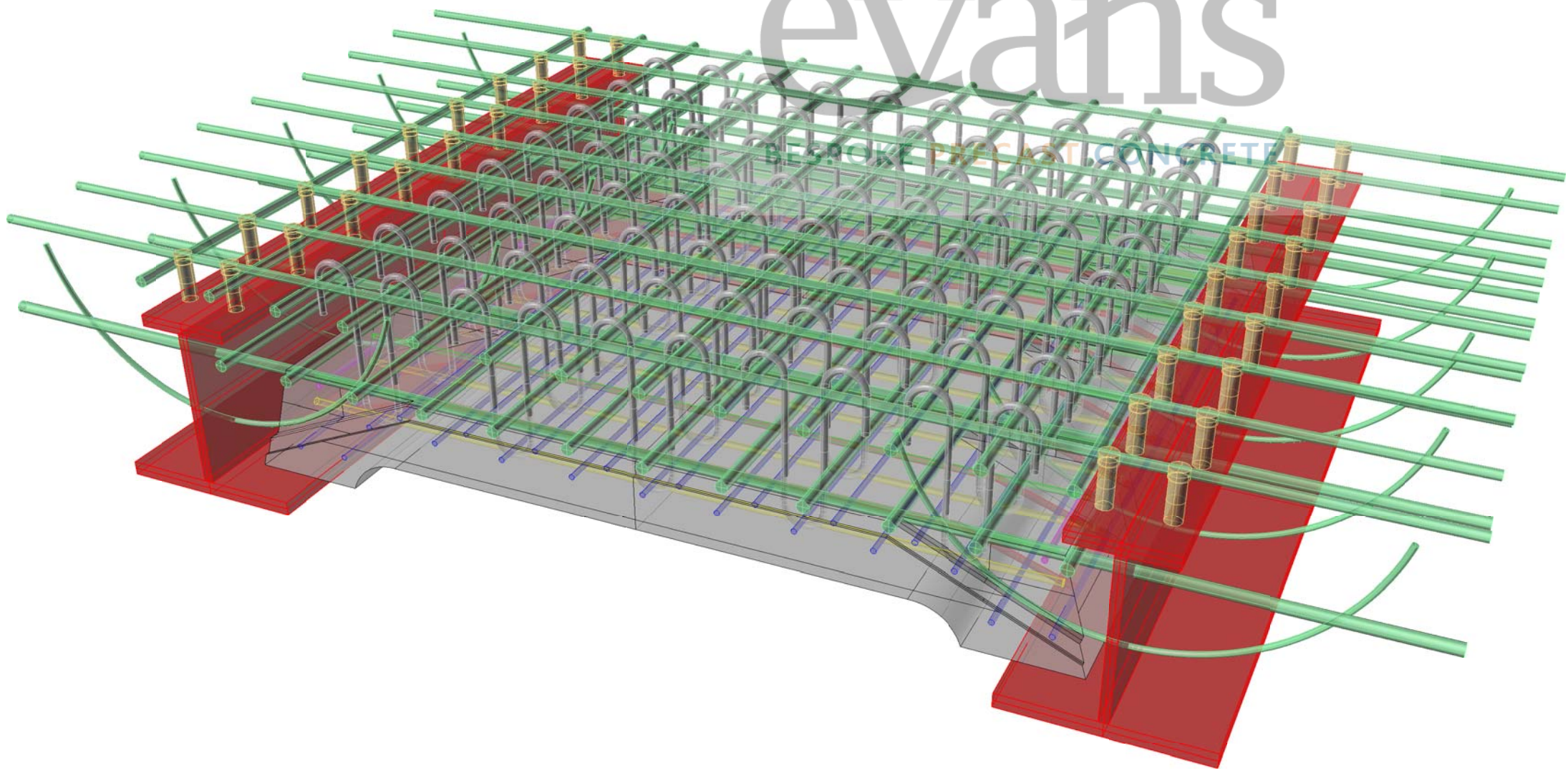
The image is a 3D CAD model of a precast concrete structure, likely a bridge deck or a similar heavy-duty component. It shows a complex arrangement of green rebar (reinforcing steel) and yellow shear studs. The structure is shown in a perspective view, with a red outline indicating the main components. The rebar is arranged in a grid pattern, and the shear studs are placed at regular intervals along the length of the structure. The model is semi-transparent, allowing the internal rebar layout to be visible. Two yellow callout boxes with blue lines pointing to specific areas of the model provide technical questions. The background features a large, stylized logo for 'evans' in a light grey font, with the tagline 'BESPOKE PRECAST CONCRETE' in a smaller, blue font below it. The logo includes a stylized bird or wing shape in shades of green and blue.

evans  
BESPOKE PRECAST CONCRETE



evans

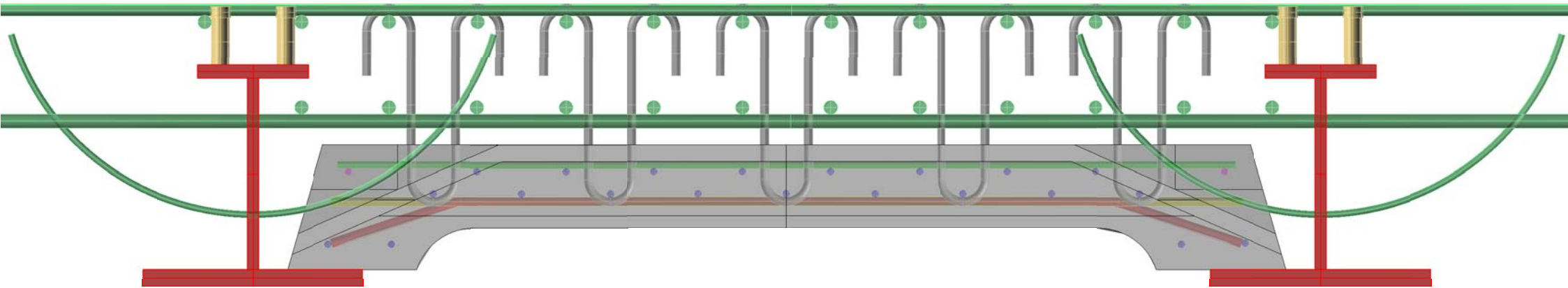
PRECAST CONCRETE





# evans

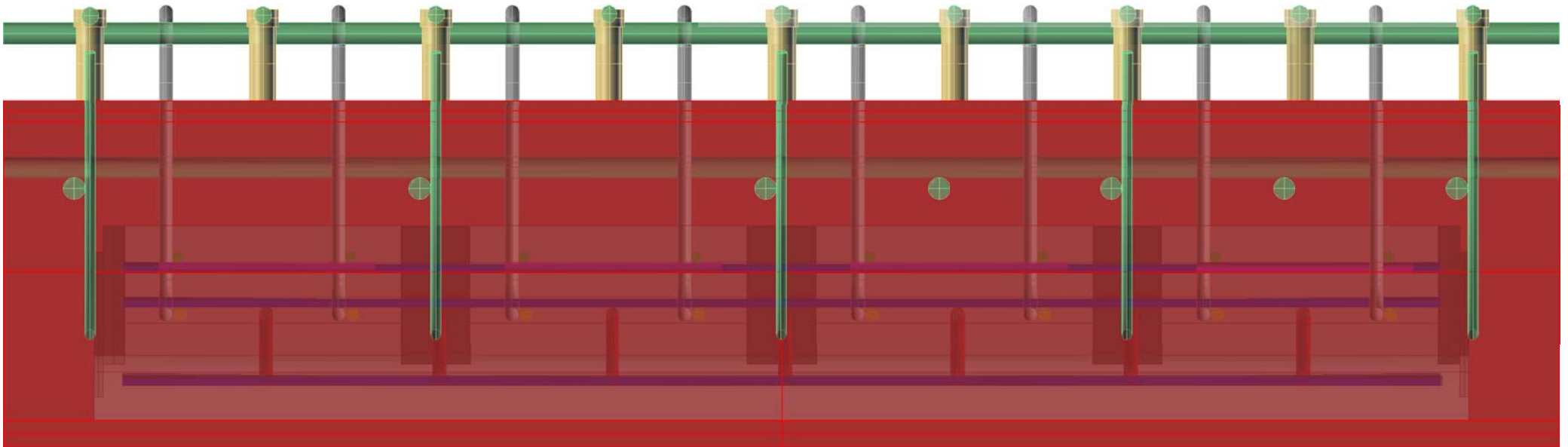
BESPOKE PRECAST CONCRETE





# evans

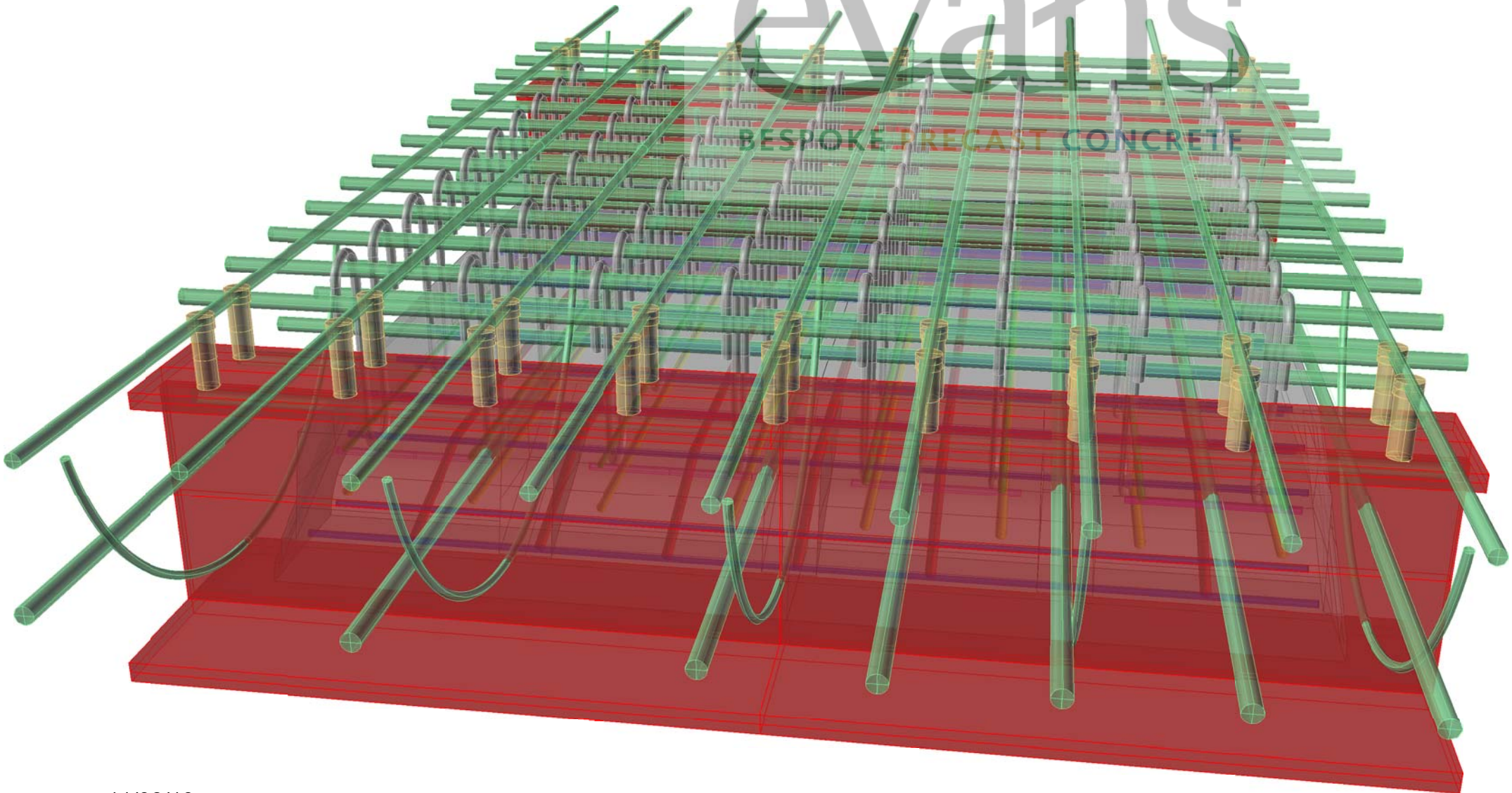
BESPOKE PRECAST CONCRETE

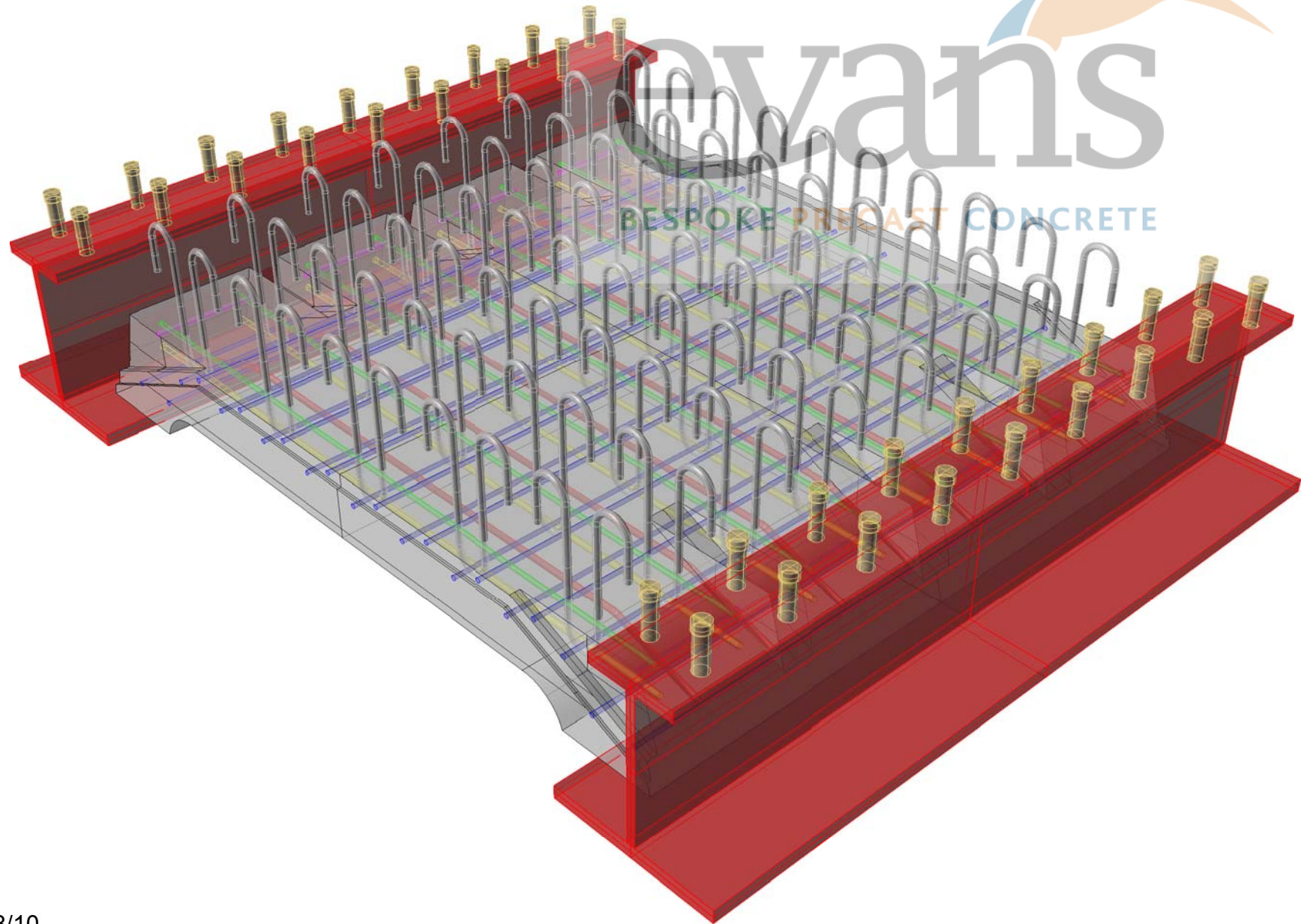




evans

BESPOKE PRECAST CONCRETE



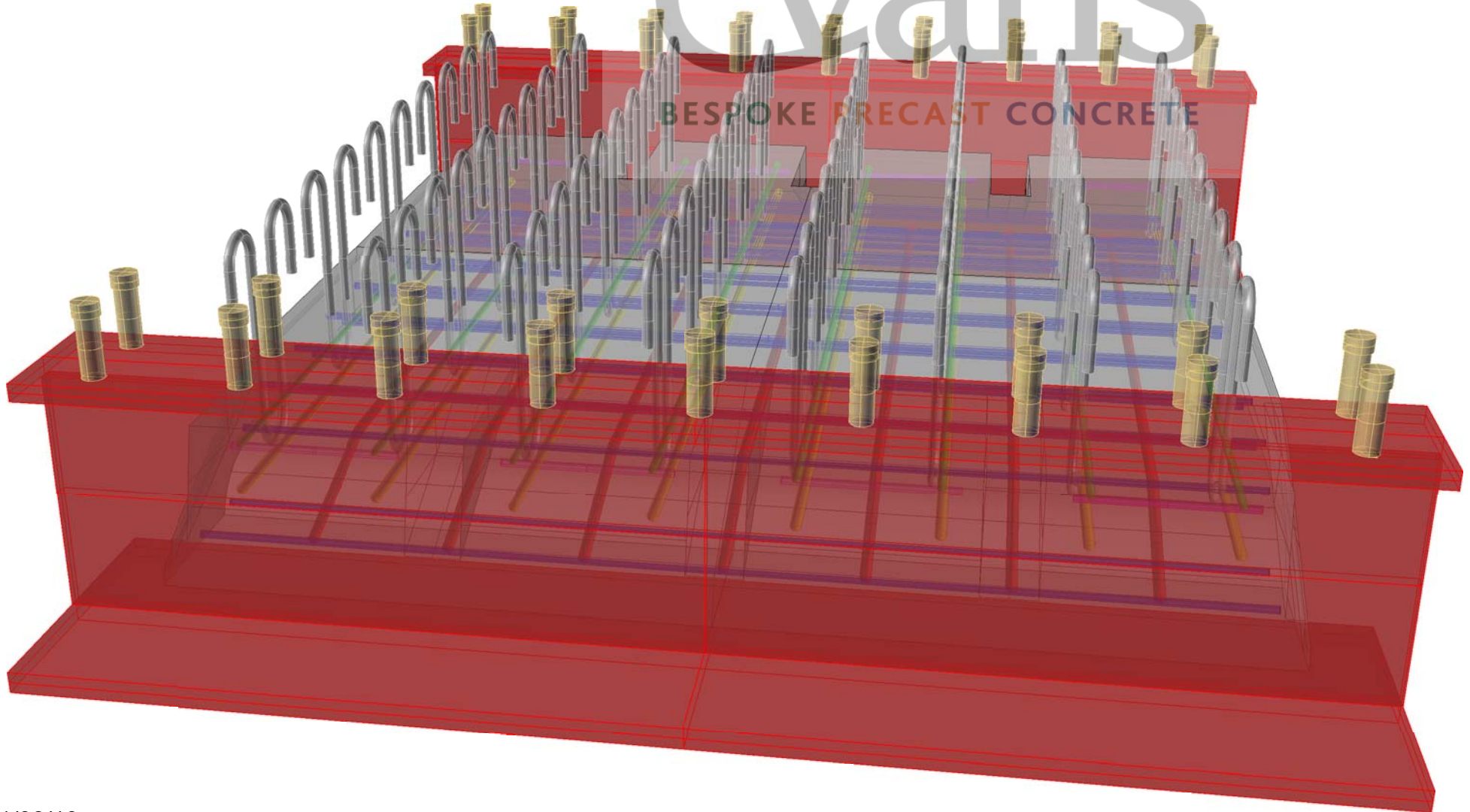


Evans  
BESPOKE PRECAST CONCRETE



evans

BESPOKE PRECAST CONCRETE





evans

BESPOKE PRECAST CONCRETE

